

- | | | | |
|--|-------------------------|--|----------------------------|
| | information centre | | café, confectionery |
| | public toilet | | refreshments |
| | car park | | pub |
| | bus stop | | |
| | post office | | |
| | ATM | | |
| | charging station | | |
| | playground | | Cross-country skiing trail |
| | workout playground | | hiking trails |
| | sluice | | educational trails |
| | facilities for cyclists | | |

ZLATÉ HORY
→ approx. 20 km

MNICHOV

HOLČOVICE
→ approx. 10 km

THE MILITARY FORTIFICATION
around Vrbno and Munich is preserved from the time of World War II. The fortification was built by the government of the Czechoslovak Republic to defend the state.

PHOTOPOINTS

Look at Vrbno from high up! Above the foot of the town there are 3 photopoints from which you can enjoy beautiful views of the town. Take a photo at or from the photopoint and share it under **#vrbnonadlani**.



THE WAY AROUND WATER

is a fun and playful trail that runs along the Opava River between Vrbno pod Pradědem and Karlovice. Over 6 km, you will learn interesting facts about the nature and history of the landscape around the river and meet new friends from the plant and animal kingdom. You will find 10 educational and lots of fun stops. Bus or train can be used for the return journey between Vrbno and Karlovice.

WANT TO ENTERTAIN THE KIDS EVEN MORE?

Pick up a beautiful, animated guide before your trip. Children will be rewarded when they complete the tasks! The trail guide is available for free during opening hours at the TIC Vrbno, in VÍCE VE MLÝNĚ and at the post office in Karlovice.

Pack a pencil, crayons for the journey, and you might even need a scarf! For more information see cestakolem vody.cz



INDUSTRIAL TRAIL

is an educational route that will guide you through the industrial history of Vrbno pod Pradědem. You will find **8 information boards** with historical photographs on the trail. For a better walk, we recommend a tour that will take you through the most interesting sights.

1. Moravolen, 2. Injection moulding company, 3. Woodworking plant, 4. Knights of the Industrial Revolution, 5. Tombs of important industrialists, 6. Glassworks, 7. Railway station, 8. Thread factory, 9. Labourer semi-detached house on Kopečná Street, 10. Labourer semi-detached houses on Husova Street, 11. House by architect Josef Hoffmann, 12. Cemetery
- Information and news can be found on the prumyslovastezka.cz website.



THE POSTAL ROAD

is a historical postal link that ran between Vienna and Wroclaw. It was established in 1626. Among other things, the route led between Andělská Hora and Vrbno.

Photopoint



Mirek Spring

6 minutes on foot 400 m

ANDĚLSKÁ HORA
→ approx. 8 km

KARLOVICE
→ approx. 6 km

CC BY-ND 4.0
Map data © OpenStreetMap Contributors, CC BY 4.0
www.openstreetmap.org
www.creativecommons.org

Graphics: Iveta Albrechtová Dučáková

Turistické informační centrum Vrbno

Jesenická 252
793 26 Vrbno pod Pradědem
+420 554 751 585
www.tic-vrbno.cz



tic_vrbno



ticvrbno



This publication was financially supported by the Moravian-Silesian Region.

WHERE TO HAVE A SNACK?

- 
- 1

Parkhotel Vrbno – a hotel with restaurant in the historical style
- 2

Jídelna v centru – a canteen right in the town centre
- 3

Pizzerie Pomodoro – a pizzeria, guest house and pub
- 4

Pension U Hradilů – a guest house with restaurant above the town
- 5

Restaurace Koliba – a restaurant at the beginning of Ludvíkov
- 6

Hotel Peras – a hotel with restaurant in Ludvíkov
- 7

Pension U Jiřího – a guest house with restaurant in Ludvíkov
- 8

Pizza Stavros – a pizza serving hatch in the town centre
- 9

Best Kebab – a fast food restaurant with seating in the town centre
- 10

Caffe 113 – a modern café in the town centre
- 11

Cukrárna Alfredo – a traditional confectionery on Nádražní Street
- 12

Nevinný bar – a wine bar and bar with outdoor seating
- 13

Rybářská bašta – a fisherman bastion with seating only in the summer season (June-August)
- 14

Hospůdka Jamajka – a pub with outdoor seating
- 15

Restaurace Pod Pradědem – a pub with outdoor seating
- 16

Hospoda U Radka – a pub with outdoor seating in Železná
- 17

Hospůdka U Dřevasu – a pub with outdoor seating



TIP FOR YOU!

In the summer months, we recommend trying the ice cream at the ice cream serving hatch at the Albert supermarket.

HOW DO I GET FROM VRBNO TO PRADĚD?

If you are going to visit the highest mountain in Moravia, **Praděd**, either by car or by bus, you need to get to **Karlova Studánka**, 7 km away. From there, a shuttle service runs every hour from three car parks (the lower car park, Hubertus car park and Sedlo Hvězda) to **Ovčárna**. There, you can see Praděd like on the palm of your hand. From Ovčárna to its top you have to walk only on foot (3 km). Bus connections to Ovčárna can be found on idos.cz. You can also drive your own car to Ovčárna for a fee, at the same hourly intervals as the shuttle bus.

More detailed information can be found on the tic-vrbno.cz/praded website, and if you like challenges and hiking, check out the hiking trails leading to Praděd.

You can find them at tic-vrbno.cz/napraded



CULTURAL MONUMENTS

The wooden bell tower, the Church of St. Michael the Archangel, the Odetka building – formerly the Weiss and Rössler factory, the villa of Fritz Grohmann, the villa of Lothar Grohmann, the Grohmann mansion, the cemetery, the Chapel of St. Hedwig in Vidly, the Church of the Visitation of the Virgin Mary in Munich, the Chapel of Our Lady of the Snows in Železná, the Schnaubel Chapel in Munich.

More details can be found at tic-vrbno.cz/pamatky



WHERE TO GO WITH THE CHILDREN?

If you have come to the town with children, do not miss the **Path Around the Water**, where there are several interactive elements for children, or the local forest park. The playground on the Husova residential area is also suitable.

WHERE TO RELAX?

For a moment of peace, we recommend the **pond biocentre**, the **forest park** or a walk to the **Mirek spring**.



WHAT SHOULD YOU NOT MISS WHEN VISITING VRBNO?

- Jakub Glassworks
- Iveta Strnadová Stained Glass Workshop
- Fishing bastion – trout fishing (summer season only)
- Hike to Zámecká hora Mountain (Fürstenwalde ruins)
- Photopoints above Vrbno
- Mirek Spring
- Cesta kolem vody (A Path along the River)
- Industrial trail and the Vrbno with great-grandfather cipher game
- Trip to Kamzičí rock and Rabenstein ruins
- Trip to Anenský vrch

More tips for trips can be found on our website.



WHERE TO STAY IN VRBNO?

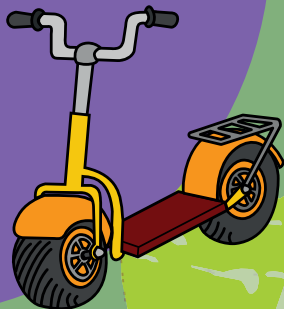
Accommodation options are constantly changing, and the current offer can be found at tic-vrbno.cz/ubytovani



E-BIKE, SCOOTER AND QUAD BIKE RENTAL

From June to September, you can rent e-bikes, quad bike or scooters to explore the town and its surroundings! In June and September only upon the prior reservation by phone at **+420 733 534 167**, in July and August the rental is open daily from 9.00 a.m. to 6.00 p.m. The last borrowing is possible at 4.00 p.m.

For more information see tic-vrbno.cz/pujcovna



ŽELEZNÁ

Železná

TAXI

Need to get somewhere?
+420 792 252 424



DID YOU KNOW...

that Miss Czech Republic 2020 **Karolína Surý** (Kopíncová), **Lubomír Petruš** – the junior European champion in cyclo-cross, **Zdeněk Mlynář** – the world junior champion in cyclo-cross or **Jaroslav Sakala** – the world champion in ski flying and Olympic medallist come from Vrbno?



VIDLY