

- | | |
|---|--|
|  information centre |  café, confectionery |
|  public toilet |  refreshments |
|  car park |  pub |
|  bus stop | |
|  post office | |
|  ATM | |
|  e-bike charging station | |
|  playground | |
|  workout playground |  cross-country skiing trail |
|  sluice |  hiking trails |
|  facilities for cyclists |  educational trails |

ZLATÉ HORY
approx. 20 km

HOLČOVICE
approx. 10 km



THE MILITARY FORTIFICATION
around Vrbno and Mnichov is preserved from the time of World War II. The fortification was built by the government of the Czechoslovak Republic to defend the state.

MNICHOV

MNICHOV

PHOTOPOINTS

Look at Vrbno from high up! Above the foot of the town there are 3 photopoints from which you can enjoy beautiful views of the town. Take a photo at or from the photopoint and share it under **#vrbnonadlani**.



VRBNO WITH GREAT-GRANDFATHER

Are you an enthusiast for ciphers, challenges and puzzles? In the information centre, we have a **cipher game** for you to buy, in which you will be guided through Vrbno by great-grandfather Johann and his grandson Hugo. They will let you into the local history and pester your brain folia.

KARLOVCE
approx. 6 km

VRBNO CULTURAL INFORMATION AND EDUCATION CENTRE

is a site where theatre performances, meetings, concerts, exhibitions as well as learnign courses and workshops are held.

kiv-vrbno.cz



INDUSTRIAL TRAIL

is an educational route that will guide you through the industrial history of Vrbno pod Pradědem. You will find information boards with historical photographs on the trail. The trail starts at the Vrbno – Ludvíkov crossroad and you can go to individual stops as you like.

1. Moravolen, 2. Injection moulding company, 3. Woodworking plant, 4. Knights of the Industrial Revolution, 5. Tombs of important industrialists, 6. Glassworks, 7. Railway station, 8. Thread factory, 9. Labourer semi-detached house on Kopečná Street, 10. Labourer semi-detached houses on Husova Street, 11. House by architect Josef Hoffmann, 12. Cemetery

Information and news can be found on the prumyslovastezka.cz website.



6 minutes on foot 400 m

ANDĚLSKÁ HORA
approx. 8 km

THE POSTAL ROAD

is a historical postal link that ran between Vienna and Wroclaw. It was established in 1626. Among other things, the route led between Andělská Hora and Vrbno.

Photopoint



Mirek Spring

CC BY-ND 4.0

Map data © OpenStreetMap Contributors, CC BY 4.0
www.openstreetmap.org
www.creativecommons.org

Graphics: Iveta Albrechtová Dučáková

Vrbno Tourist Information Centre

Jesenická 252
793 26 Vrbno pod Pradědem
+420 554 751 585
www.tic-vrbno.cz



tic_vrbno



ticvrbo



Edition 1 in 2025

This publication was financially supported by the Moravian-Silesian Region.

WHERE TO HAVE A SNACK?

- 
- 1

Parkhotel Vrbno – a hotel with restaurant in the historical style
- 2

Jídelna v centru – a canteen right in the town centre
- 3

Pizzerie Pomodoro – a pizzeria, guest house and pub
- 4

Pension U Hradilů – a guest house with restaurant above the town
- 5

Restaurace Koliba – a restaurant at the beginning of Ludvíkov
- 6

Hotel Peras – a hotel with restaurant in Ludvíkov
- 7

Pension U Jiřího – a guest house with restaurant in Ludvíkov
- 8

Pizza Stavros – a pizza serving hatch in the town centre
- 9

Best Kebab – a fast food restaurant with seating in the town centre
- 10

Caffe 113 – a modern café in the town centre
- 11

Cukrárna Alfredo – a traditional confectionery on Nádražní Street
- 12

Nevinný bar – a wine bar and bar incl. outdoor seating
- 13

Rybářská bašta – a fisherman bastion with seating only in the summer season (June-August)
- 14

Hospůdka Jamajka – a pub incl. outdoor seating
- 15

Restaurace Pod Pradědem – a pub incl. outdoor seating
- 16

Hospoda U Radka – a pub incl. outdoor seating in Železná
- 17

Hospůdka U Dřevasu – a pub incl. outdoor seating
- 18

Kavárna U Dvořáků – a cafeteria incl. outdoor seating

TIP FOR YOU!

In the summer months, we recommend trying the ice cream at the ice cream serving hatch at the Albert supermarket.

HOW DO I GET FROM VRBNO TO PRADĚD?

If you are going to visit the **highest mountain in Moravia, Praděd**, either by car or by bus, you need to get to **Karlova Studánka**, 7 km away. From there, a shuttle service runs every hour from **three car parks** (the lower car park, Hubertus car park and Sedlo Hvězda) to **Ovčárna**. There, you can see Praděd like on the palm of your hand. From Ovčárna to its top you **have to walk** only on foot (3 km). Bus connections to Ovčárna can be found on idos.cz. You can also drive your own car to Ovčárna for a fee, at the same hourly intervals as the shuttle bus.

More detailed information can be found on the tic-vrbno.cz/praded website, and if you like challenges and hiking, check out the hiking trails leading to Praděd.

You can find them at tic-vrbno.cz/napraded



MONUMENTS

The wooden bell tower, the Church of St. Michael the Archangel, the Odetka building – formerly the Weiss and Rössler factory, the villa of Fritz Grohmann, the villa of Lothar Grohmann, the Grohmann mansion, the cemetery, the Chapel of St. Hedwig in Vidly, the Church of the Visitation of the Virgin Mary in Munich, the Chapel of Our Lady of the Snows in Železná, the Schnaubel Chapel in Mnichov.

More details can be found at tic-vrbno.cz/pamatky



WHERE TO GO WITH THE CHILDREN?

If you have come to the town with children do not miss the **POKLAD** game (TREASURE) which can be bought in the information centre. It will keep your children entertained in the local forest park and, in addition, after successfully completing the tasks, they will find treasure in the garden of the information centre.



RUINS

The medieval castles in Vrbno region were built in the 13th and 14th centuries. The remains of walls and fortifications, the outlines of castle moats and ramparts (**Freudenstein, Fürstenwalde, Rabenstein, Weissenstein and Quinburg**) only remained of them.

More information about the ruins and tips for trips can be found on the tic-vrbno.cz/zrizeniny website



WHERE TO STAY IN VRBNO?

Accommodation options are constantly changing and the current offer can be found at tic-vrbno.cz/ubytovani

If you need a specific recommendation, contact us at **+420 554 751 585!**



WHERE TO RELAX?

For a moment of peace we recommend the **forest park** or a walk to the **Mírek spring**.



WHAT SHOULD YOU NOT MISS WHEN VISITING VRBNO?

- Jakub Glassworks – +420 737 148 780
- TOMI Glassworks – +420 728 359 989
- Iveta Strnadová Stained Glass Workshop – +420 731 177 688
- Fishing bastion – trout fishing (summer season only)
- Hike to Zámecká hora Mountain (Fürstenwalde ruins)
- Photopoints above Vrbno
- Mírek Spring
- Industrial trail and the Vrbno with great-grandfather cipher game
- Trip to Kamzičí rock and Rabenstein ruins
- Trip to Anenský vrch

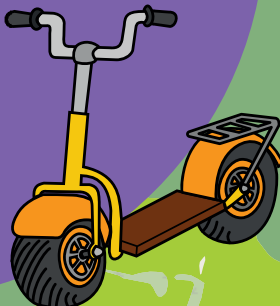
More tips for trips can be found on our tic-vrbno.cz/tipynavylety



E-BIKE, SCOOTER AND QUAD BIKE RENTAL

From June to September, you can rent e-bikes, quad bike or scooters to explore the town and its surroundings! In June and September only weekends upon the prior reservation by phone at **+420 733 534 167**, in July and August the rental is open daily from 9.00 a.m. to 6.00 p.m. The last borrowing is possible at 4.00 p.m.

For more information see tic-vrbno.cz/pujcovna



EVENTS IN VRBNO

Current events held in Vrbno can be found on tic-vrbno.cz/kalendar



DID YOU KNOW...

That Miss Czech Republic 2020 **Karolína Surý** (Kopíncová), **Lubomír Petruš** – the junior European champion in cyclo-cross, **Zdeněk Mlynář** – the world junior champion in cyclo-cross, **Jaroslav Sakala** – the world champion in ski flying and Olympic medallist, and **Jitka Stiborová** (Stará) – seven-times CSSR champion in Sokol military fitness race (biathlon) come from Vrbno?

TAXI

Need to get somewhere?
+420 792 252 424



HISTORICAL WINDOW

13th century – founding of the first settlement, Gesenek

1611 – the settlement is promoted to the free upper town of Würbenthal

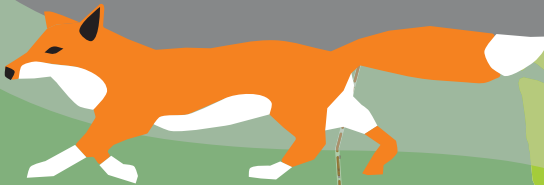
1669 – the witch hysteria did not keep away from Vrbno, where the then twenty-year-old Agnes Metzner was burnt to death. During the trials, another unfortunate woman was executed in Vrbno

1880 – establishment of the Vrbno – Milotice railway

1910 – electric lamps were lit for the first time in Vrbno

1938 – Adolf Hitler passed through Vrbno and the Sudetenland, it was annexed to the Third Reich

1945 – the post-war expulsion of the Germans living in the border area. The infamous hunger march from Krnov to Králíky also led through Vrbno



Chapel of Our Lady of the Snows

ŽELEZNÁ

Železná

Ludvíkov

Železná pod Pradědem

44 020

Mlýnský potok pod Pradědem

CHKO Jeseníky

Husquarna Manufacturing CZ

Střední Opava

Chapel of St. Hedwig

VIDLY